

Pádua, MAF<sup>1,2</sup>; Semião-Francisco, L.<sup>1</sup>; Parames, S<sup>1</sup>; de Stefano, MCR<sup>2</sup>; Ueno, J<sup>1</sup>

(1) GERA – Instituto Medicina Reprodutiva de São Paulo, Brazil, (2) Synesis, São Paulo, Brazil  
marcia@clincasynesis.com.br

## INTRODUCTION AND OBJECTIVE

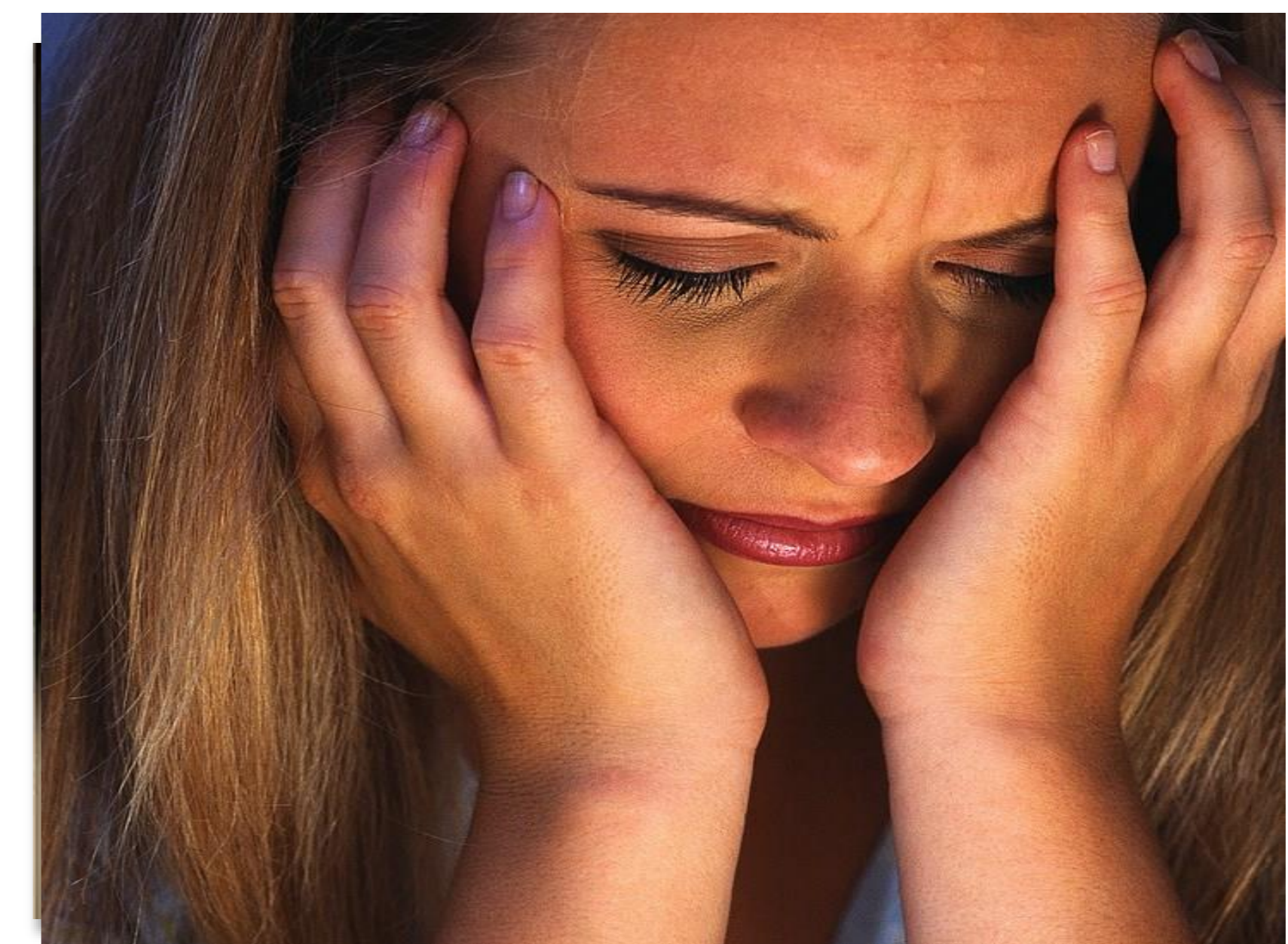
Fertility problems consist of both medical and emotional aspects. Dealing with these problems comprises various elements: uncertainty and uncontrollability of treatment outcome, feeling of failure and the loss of hopes of pregnancy and creating a family. Depression is usually associated to stressful situations and in this context, women undergoing fertility treatment might be more prone to depression.

### OBJECTIVE

The aim of this study was to explore psychosocial effects of endometriosis on infertility patients using the Beck's Depression Inventory.

## DESIGN AND METHODS

This is a prospective clinical study. One hundred and eight patients seen at an infertility clinic in Sao Paulo were invited to complete the Beck's Depression Inventory (BDI) and questions about their general health while waiting for their medical appointment. All respondents were informed about the objectives of the study and signed consent forms.

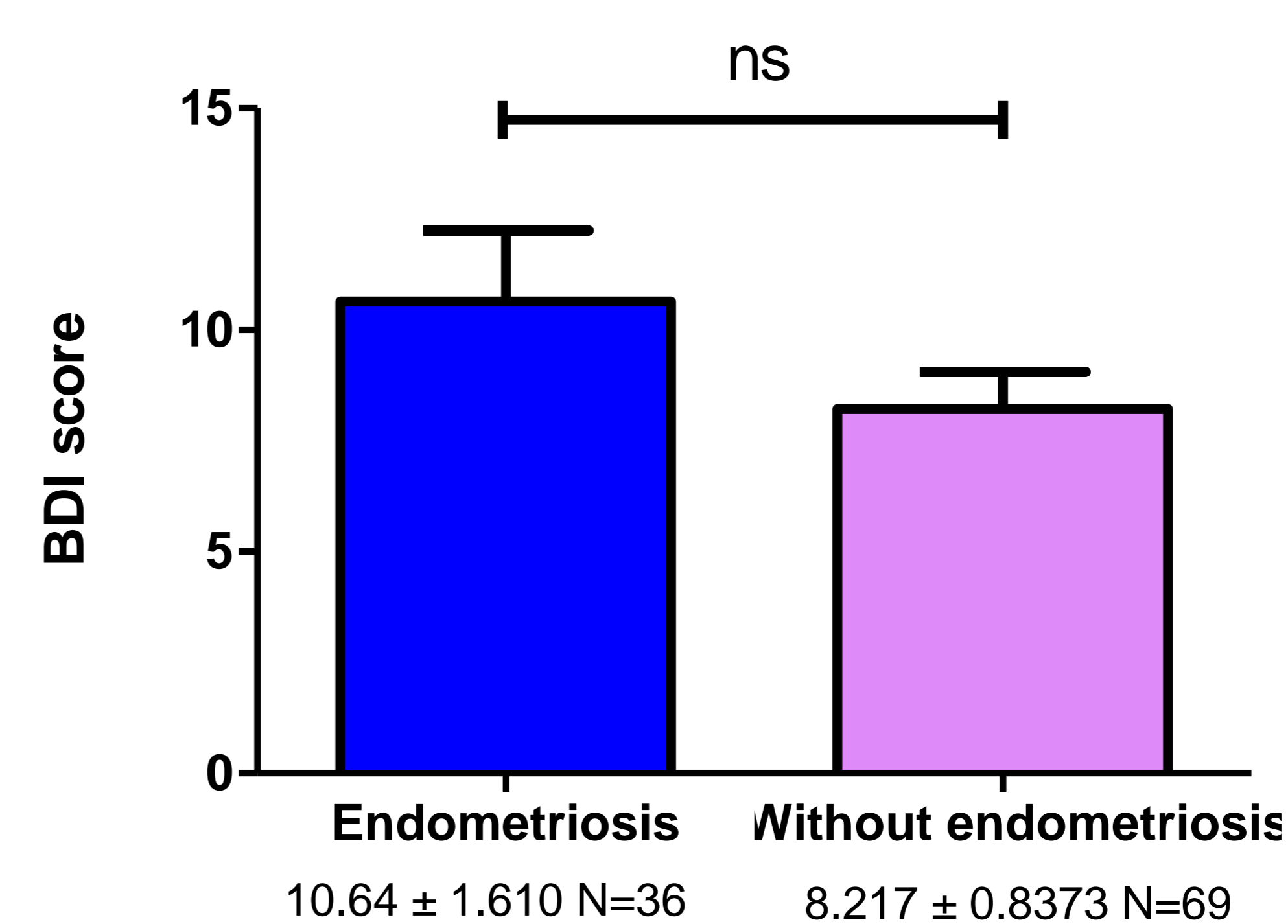
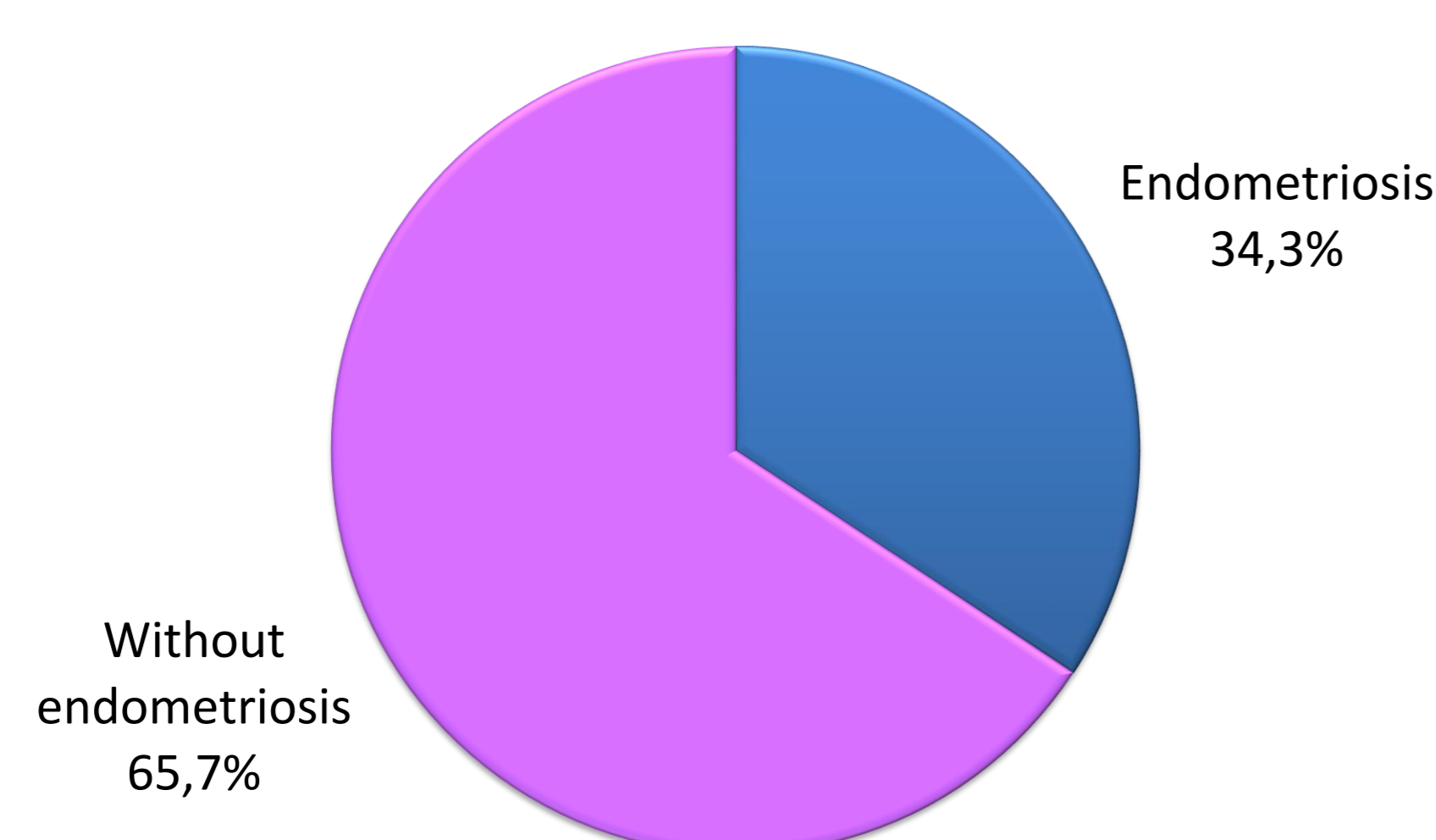


## RESULTS

BDI scores indicated that patients facing infertility were overall not depressed ( $9.0 \pm 0.8$ ; mean  $\pm$  SEM). The incidence of endometriosis in this group of women was 34.2% (36 patients). When BDI score was analyzed taking into account endometriosis, the group with the disease had a higher score than patients without it ( $10.6 \pm 1.6$  vs  $8.2 \pm 0.8$ ) although this difference was not significant and both groups were not depressed.

**CONCLUSION:** Women with endometriosis showed higher scores than women without it but the difference in their scores was not significant. Our data suggests that although suffering from a serious and many times debilitating disease, in addition to infertility, this group of women was not depressed.

Prevalence of endometriosis on infertile women



## CONCLUSION

Women with endometriosis showed higher scores than women without it but the difference in their scores was not significant. Our data suggests that although suffering from a serious and many times debilitating disease, in addition to infertility, this group of women was not depressed.